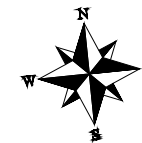
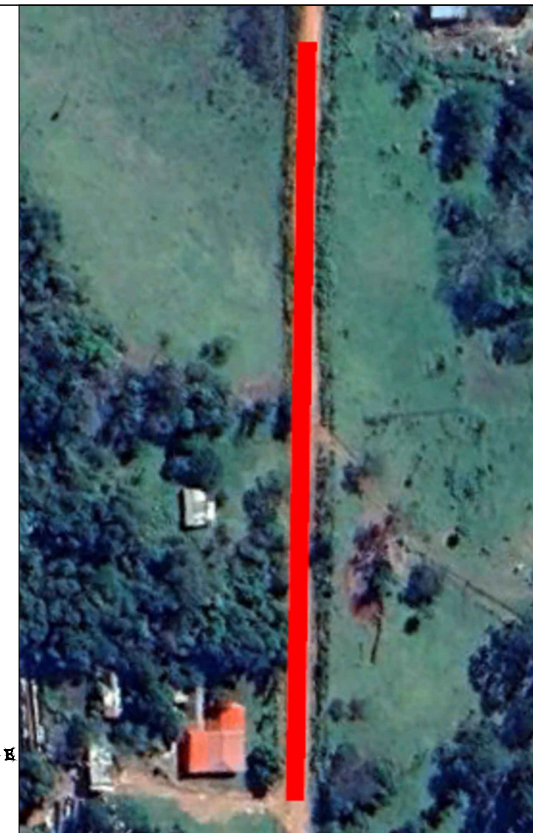


**SECCION TRANSVERSAL**



**EMPEDRADO EXISTENTE**

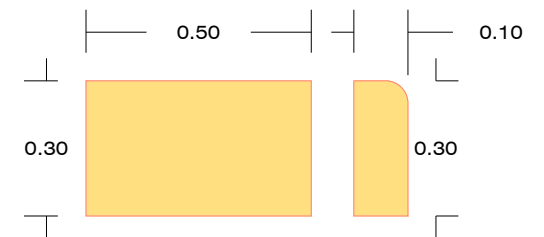


**CAMINO DE TIERRA**



**CAMINO A EMPEDRAR**

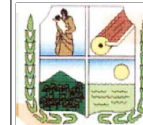
**DETALLE CORDON CUNETETA**



**OBRA: CONSTRUCCION DE PAVIMENTO TIPO EMPEDRADO**

UBICACION: CALLE TACUARO SUR KM 1.5

PLANO N:  
1



**MUNICIPALIDAD DE JUAN E. O'LEARY**

Nelson Alfredo Grau V.  
Ing. Civil  
Reg. Prof. N° 5717