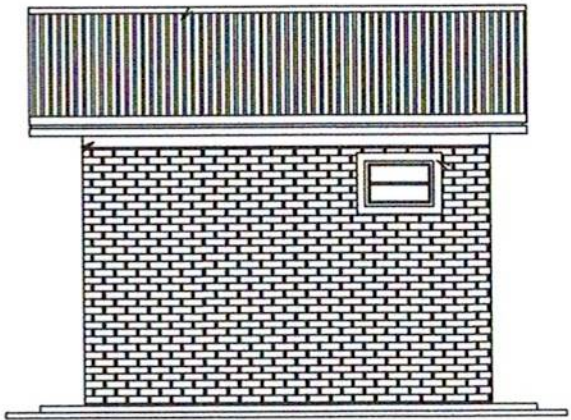
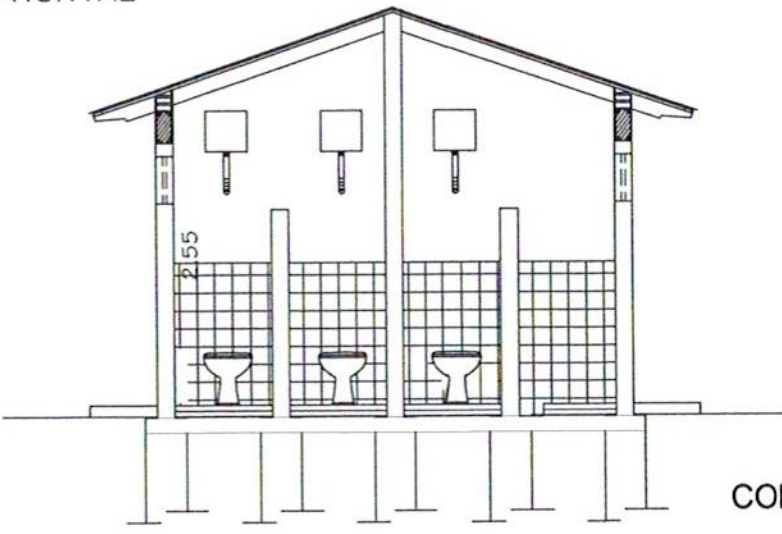


FACHADA FRONTAL



FACHADA LATERAL



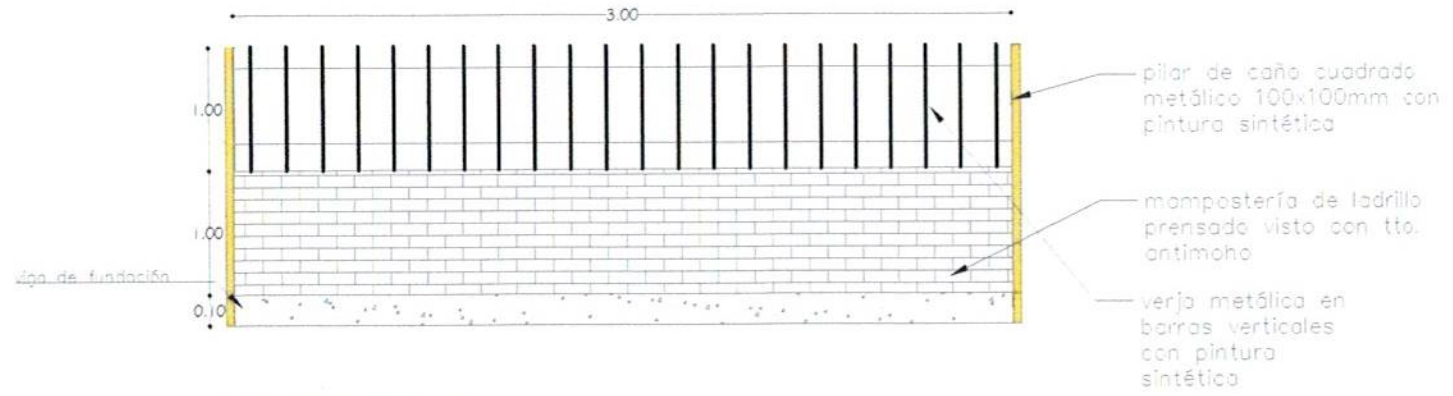
CORTE A - A

MUNICIPALIDAD DE CAMPO ACEVAL
DEPARTAMENTO DE OBRAS

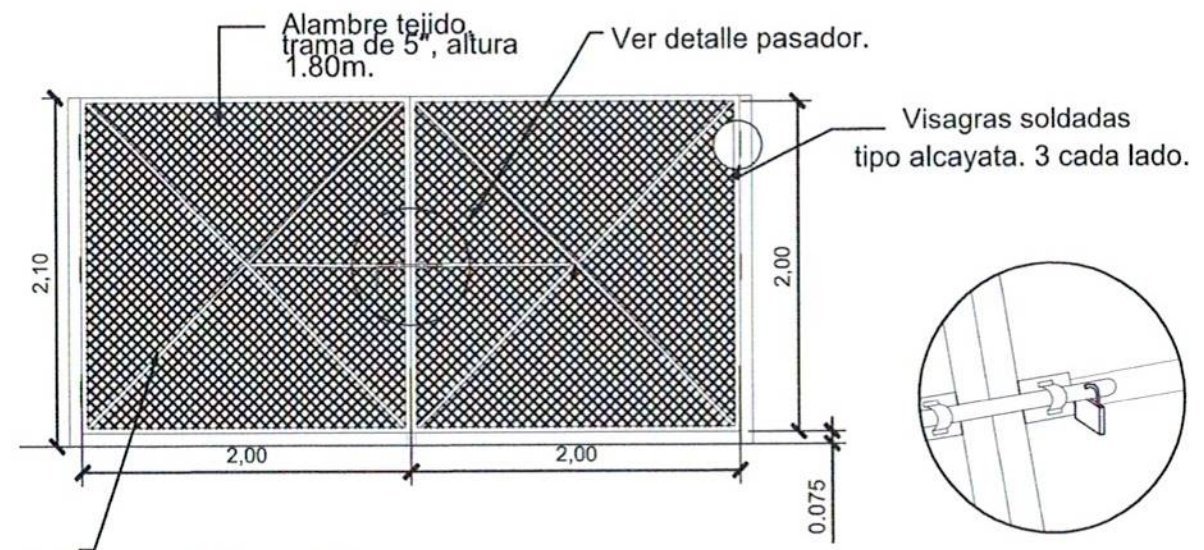
Escuela Básica Nº 2061

Patricia Cantero
Ing. Patricia Cantero

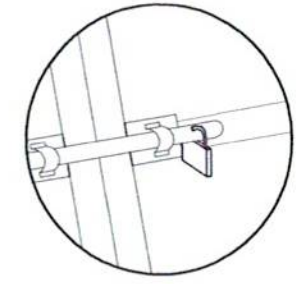
CONSTRUCCIÓN DE SSHH SEXADO 3.6x4.35 M.



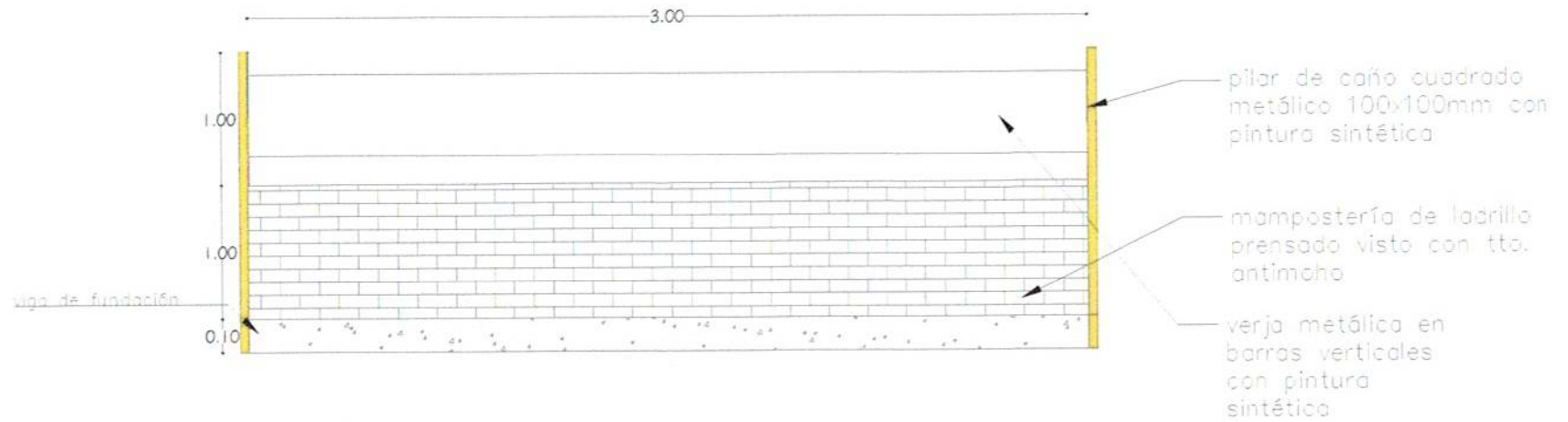
CORTE TRANSVERSAL
Escala 1:50



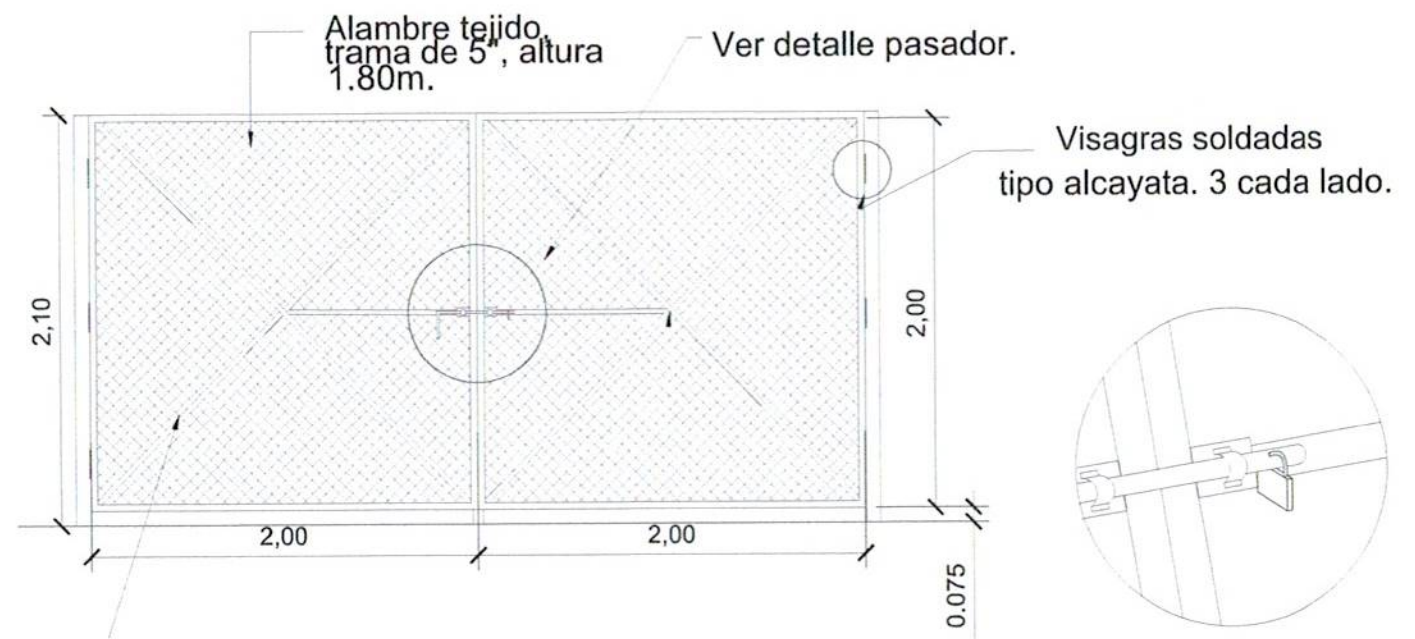
PORTON VEHICULAR
Escala 1:50



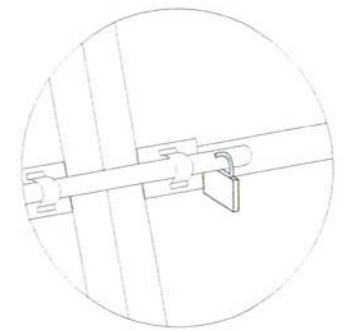
DETALLE DE PASADOR SIN ESCALA



CORTE TRANSVERSAL
Escala 1:50

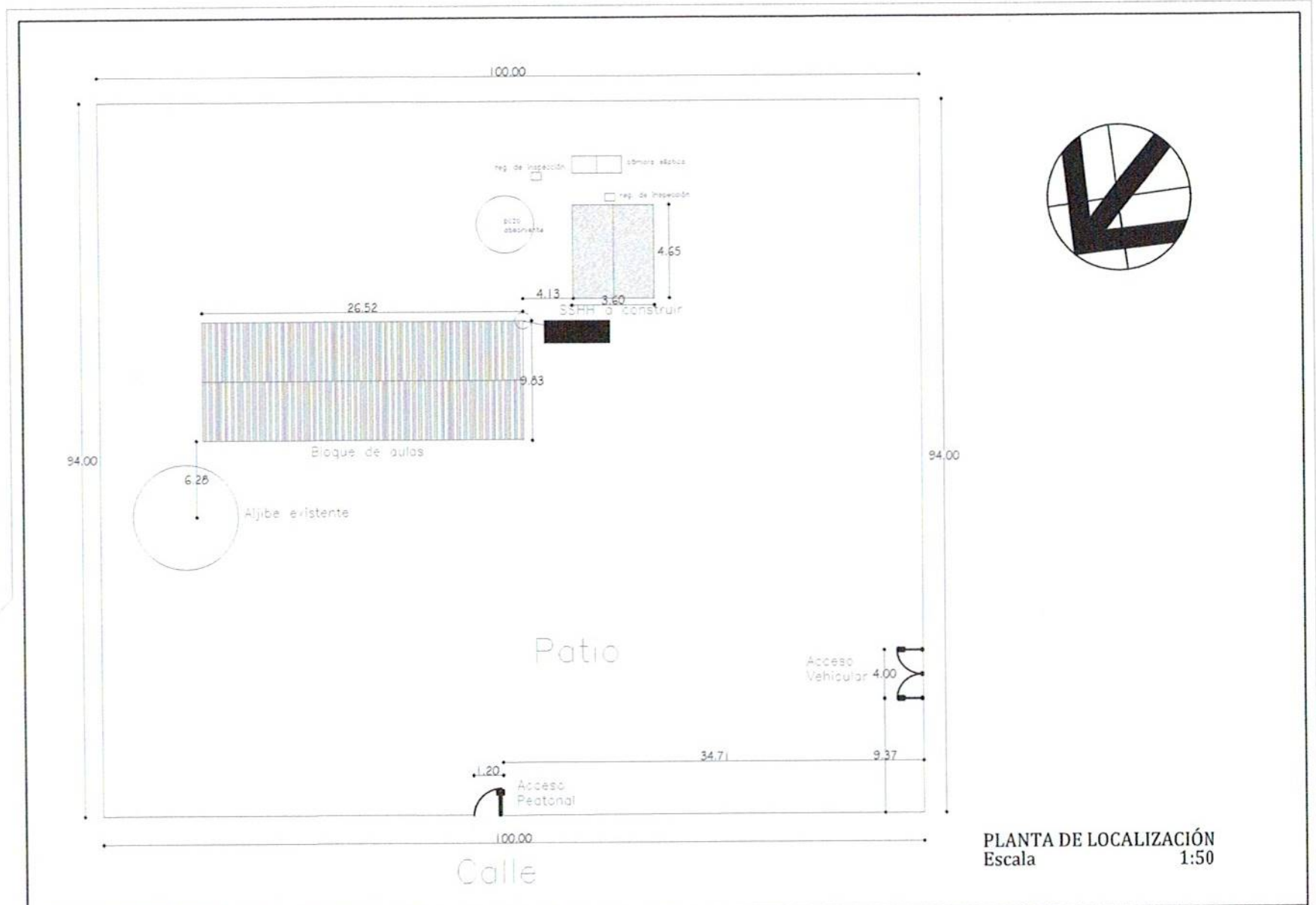


PORTON VEHICULAR
Escala 1:50



DETALLE DE PASADOR SIN ESCALA

Patricia Cantero
Ing. Patricia Cantero



MUNICIPALIDAD DE CAMPO ACEVAL
DEPARTAMENTO DE OBRAS

Escuela Básica Nº 2061

CONSTRUCCIÓN DE CERCO PERIMETRAL Y SSHH

Patricia Cantero
Ing. Patricia Cantero