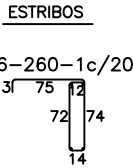
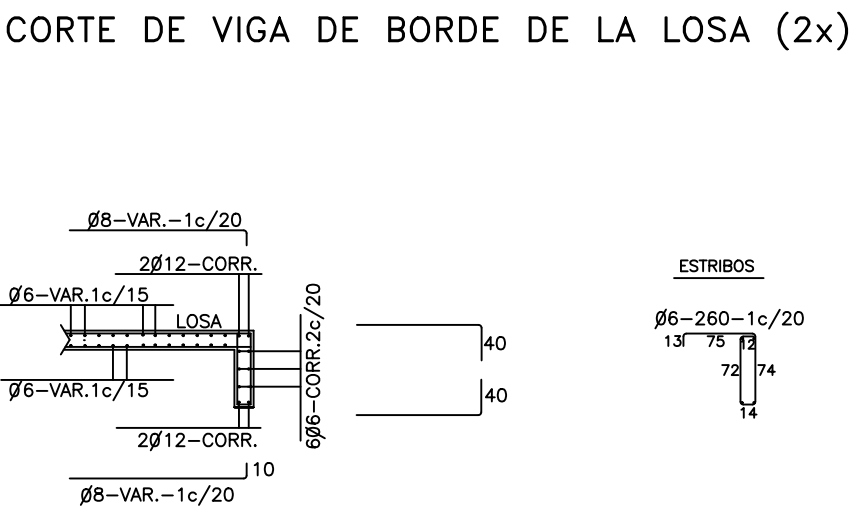
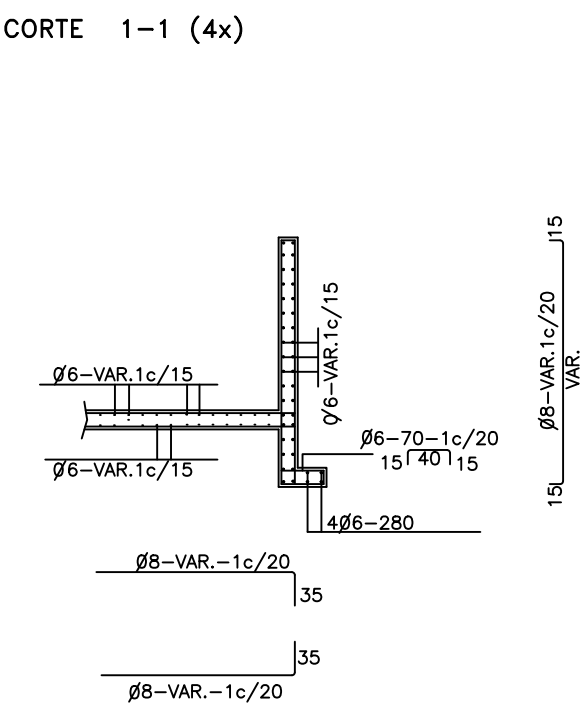
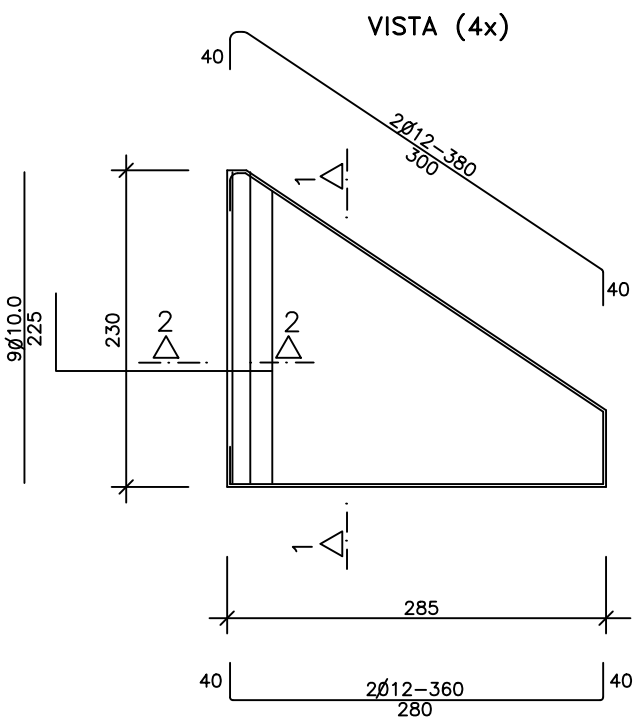


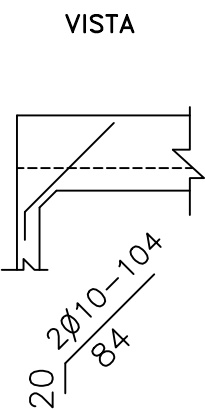
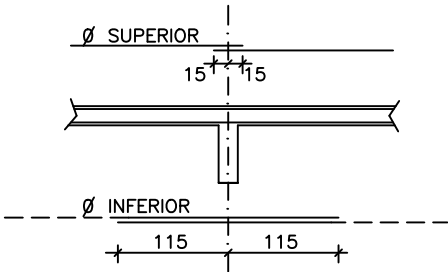
Lámina 4 - Planos tipo de alcantarillas

ARMADURAS DE CABECERAS – ALCANTARILLA CELULAR DE 1.00x1.00

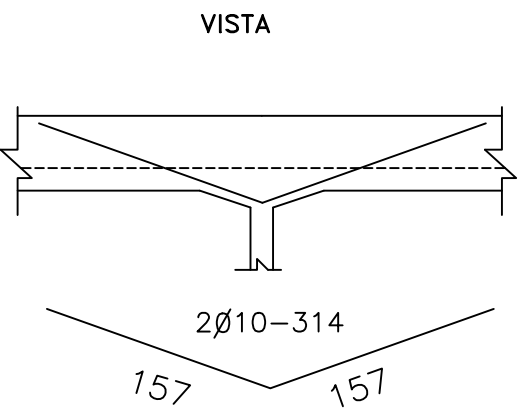


Ø	1.00 x 1.00		
TIPO	SIMPLE	DOBLE	TRIPLE
6.0	221	277	293
8.0	290	503	546
10.0	60	60	60
12.0	118	118	118
TOTAL	689 Kg	958 Kg	1.017 Kg

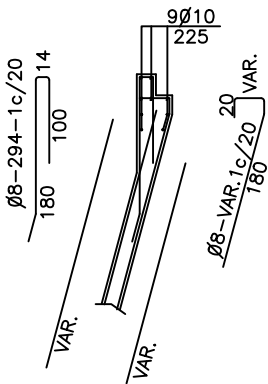
EMPALME DE LAS ALCANTARILLAS CON LAS CABECERAS (LOSA INFERIOR)



MENSULAS



CORTE 2-2 (4x)



OBSERVACIONES:

- 1- EL HORMIGON UTILIZADO DEBE SER 21 Mpa
- 2- EL ACERO 4200 Kg/cm2