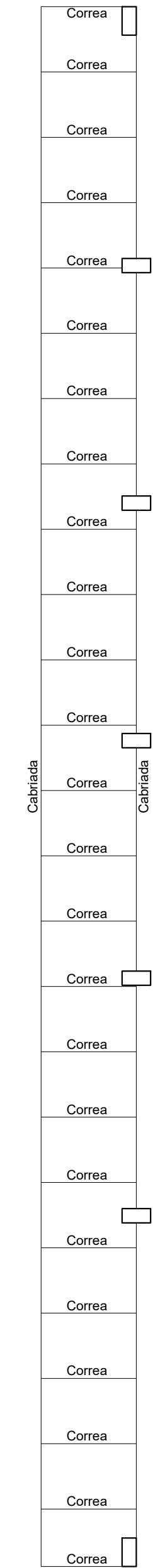
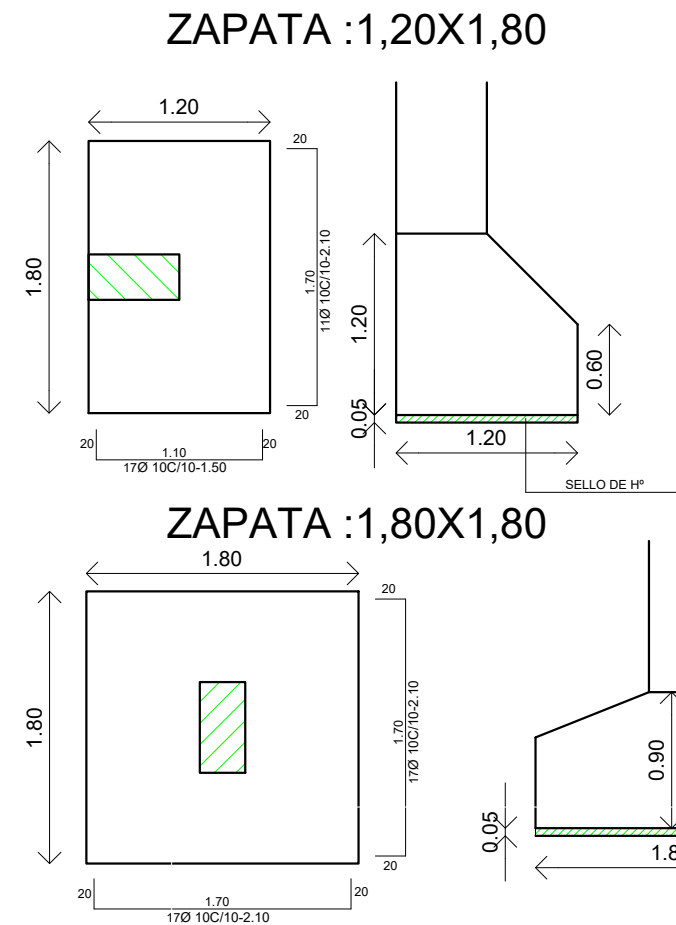


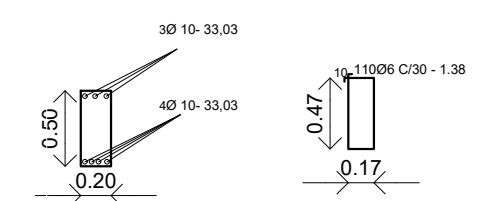
PLANTA DE FUNDACIÓN
ESC: 1/100



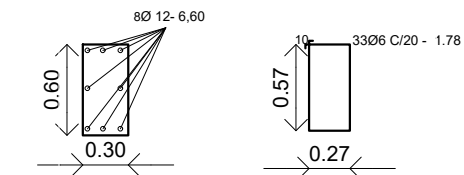
PLANTA DE TECHO
ESC: 1/100



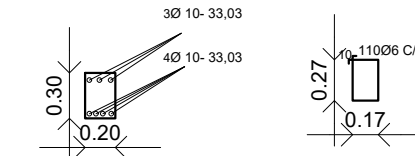
VIGA CADENA 20X50



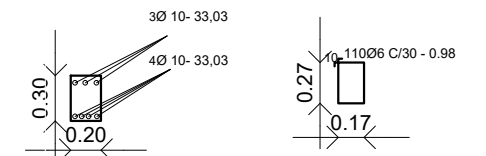
PILAR 30 X 60



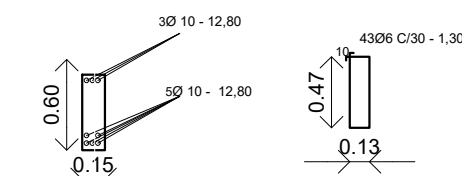
VIGA INTERMEDIA 20X30



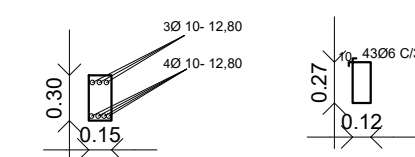
VIGA SUPERIOR 20X30



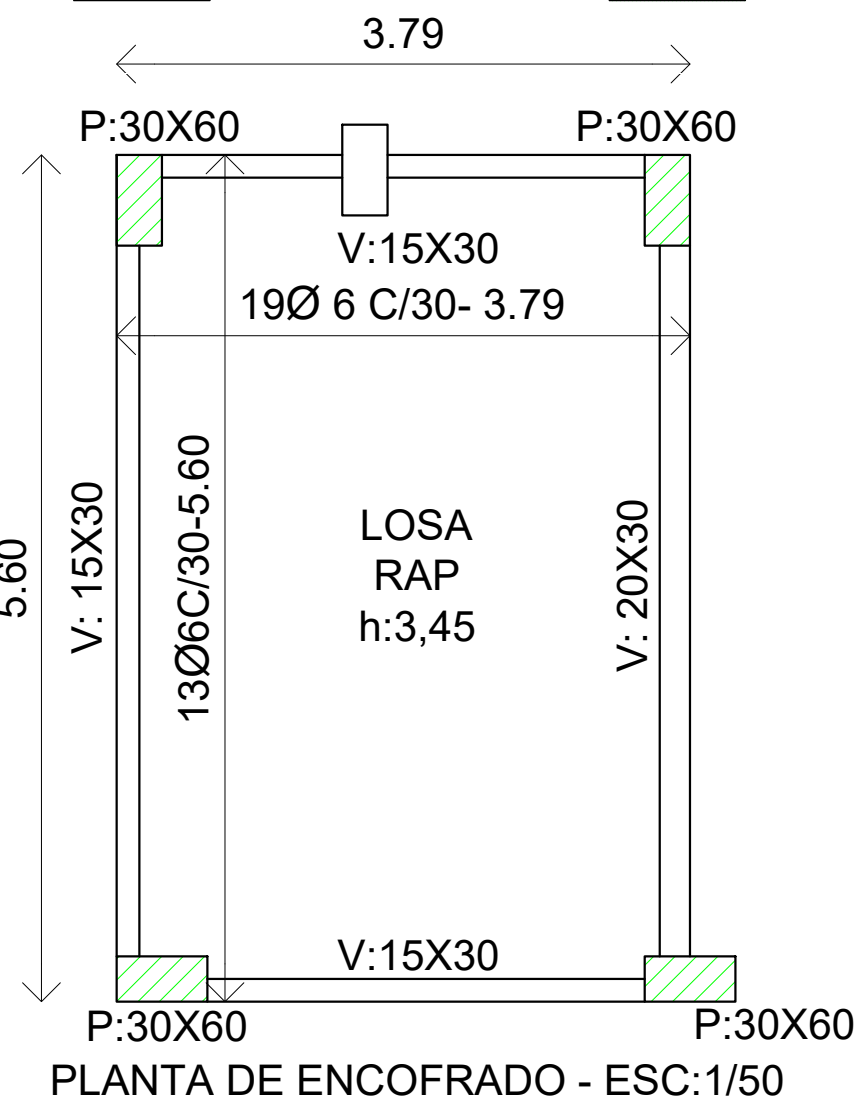
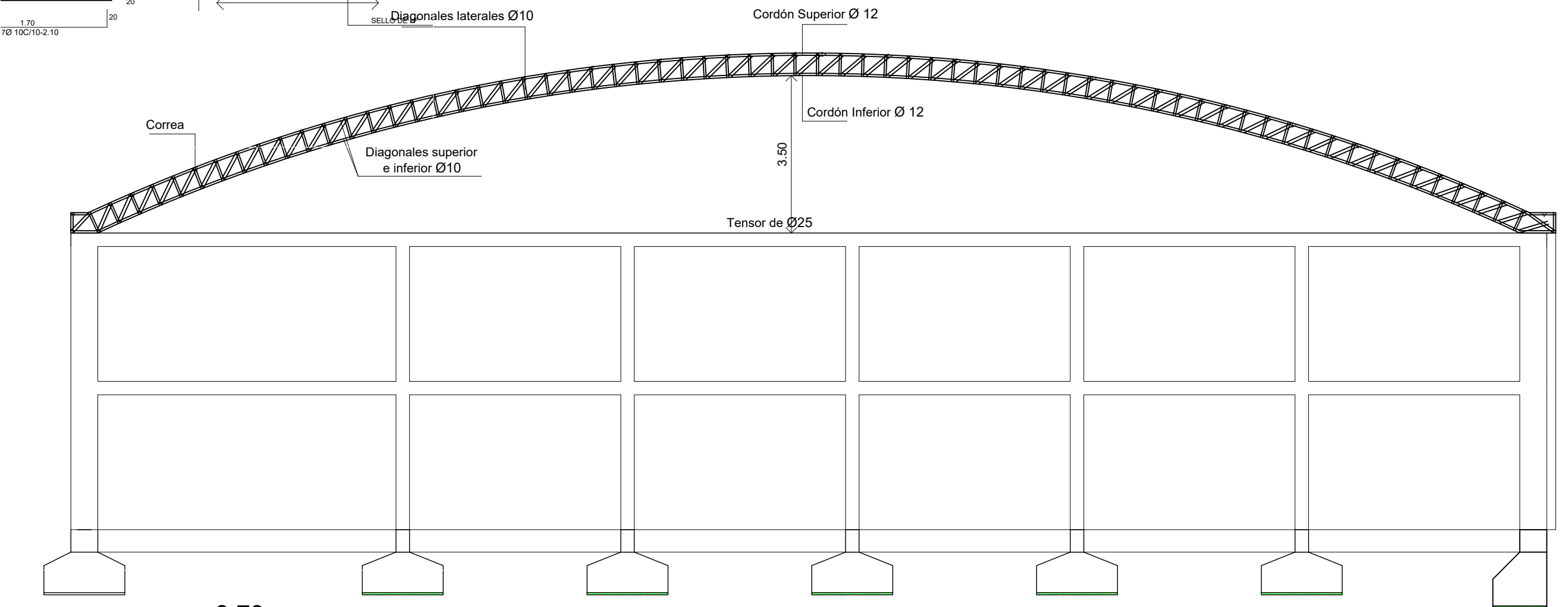
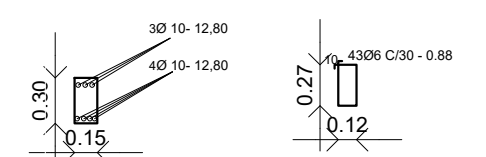
VIGA CADENA 15X50

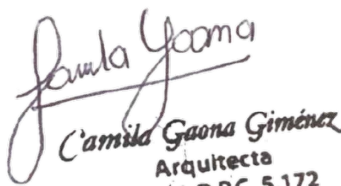


VIGA INTERMEDIA 15X30



VIGA SUPERIOR 15X30



PROYECTO: POLIDEPORTIVO DE LA CIUDAD DE ALTOS		
CTA. CTE. CTRAL N°:	SUP A CONST:	SUP. DE TERRENO:
UBICACIÓN: Calle Domingo M. de Irala c/ Luis A. del Parana		DISTRITO: ALTOS
PROPIETARIO: Municipalidad de Altos		
DIRECCION Luis A. del Parana c/ Defensores del Chaco		
PROFESIONAL: Arq. Camila Gaona Gimenez	PAT N°: 5.172	
<div> Camila Gaona Gimenez Arquitecta PROFESIONAL</div>		