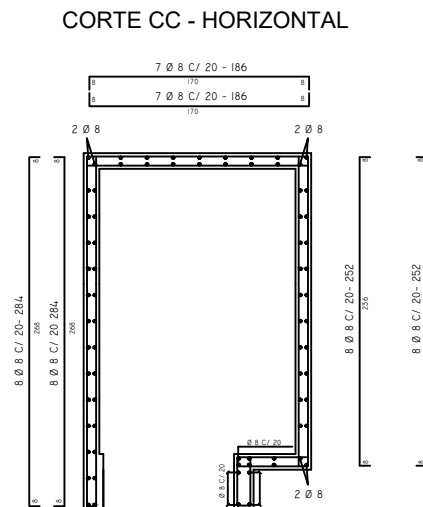
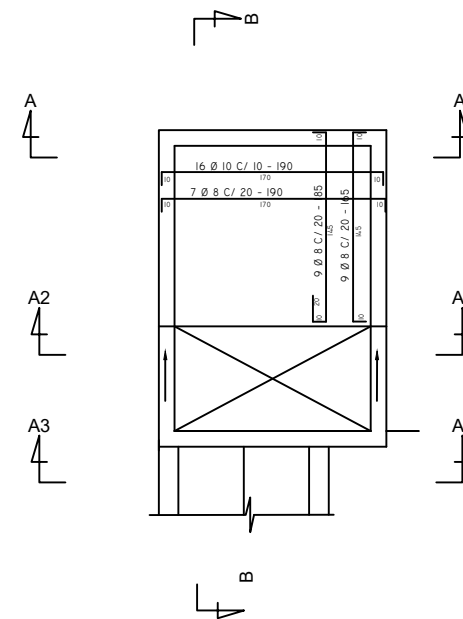


PLANTA (SM1- a)
LOSA SUPERIOR



Technical drawing of a square foundation. The drawing shows a square with a central square hole. The outer square has a side length of 1.7400. The inner square has a side length of 0.1500. The distance from the center of the inner square to the center of the outer square is 0.0983. The distance from the center of the inner square to the top edge of the outer square is 0.12. The distance from the center of the inner square to the bottom edge of the outer square is 1.4183. The drawing is labeled with dimensions and a scale of 1:100.

LOSA SUPERIOR

13.5

8 Ø 8 C/ 20-215

3.0

8

8 Ø 8 C/ 20-215

25.0

7 Ø 8 C/ 20-273

3.0

8 Ø 8 C/ 20-215

8 Ø 8 C/ 20-273

0.20

VAR

[illegible]

Technical drawing of a square table with a glass top and metal frame. The drawing shows the table from the top and side. The top view is a square with dimensions 145x145 cm. The side view shows a height of 90 cm. The frame is made of metal with a diameter of 6 cm. The table has a glass top with a thickness of 10 mm. The drawing includes dimensions for the frame, glass, and overall table size.

RESISTENCIA CARACTERISTICA DE MATERIALES
 H^R fck= 210 kg/cm²
 A^R fyK= 4200 kg/cm²
 Recubrimiento adoptado= 3 cm
 $H^R R^R$ = 5cm
 Norma de Calculo: NBR6118
 Los aceros para las rejillas e insertos en el H^R deben ser Galvanizados en caliente

<p align="center">REPUBLICA DEL PARAGUAY MINISTERIO DE OBRAS PUBLICAS Y COMUNICACIONES GABINETE DEL VICEMINISTRO DE OBRAS PUBLICAS Y COMUNICACIONES DIRECCION DE VIALIDAD</p>	
<p align="center">SUMIDEROS</p>	<p align="center">FECHA: FEBRERO / 2024</p>
	<p align="center">ESCALA PRINCIPAL: 1/100</p>
	<p align="center">LAMINA Nº OD-08</p>