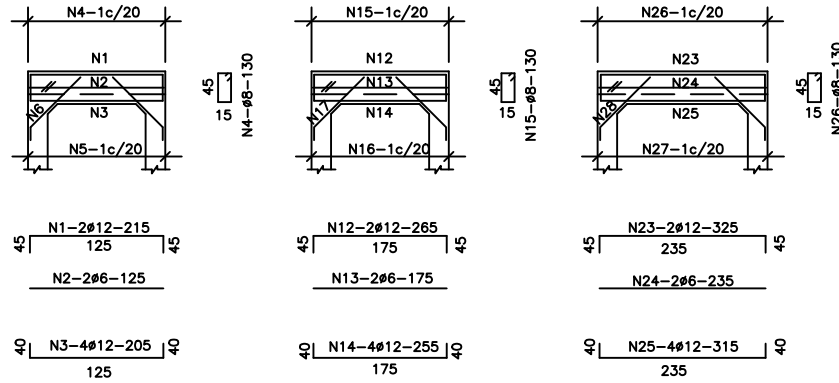


ALCANTARILLA CELULAR SIMPLE

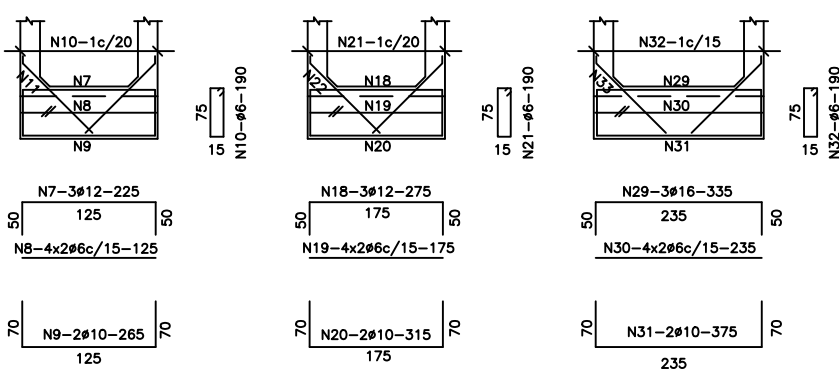
VIGAS DE BORDE DE LA LOSA SUPERIOR

L=100 (2x) L=150 (2x) L=200 (2x)

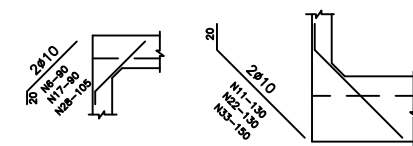


VIGAS DE BORDE DE LA LOSA INFERIOR

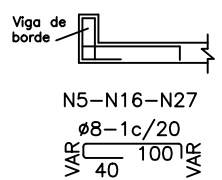
L=100 (2x) L=150 (2x) L=200 (2x)



CHAFLÁN
SUPERIOR INFERIOR



VIGA DE BORDE SUPERIOR

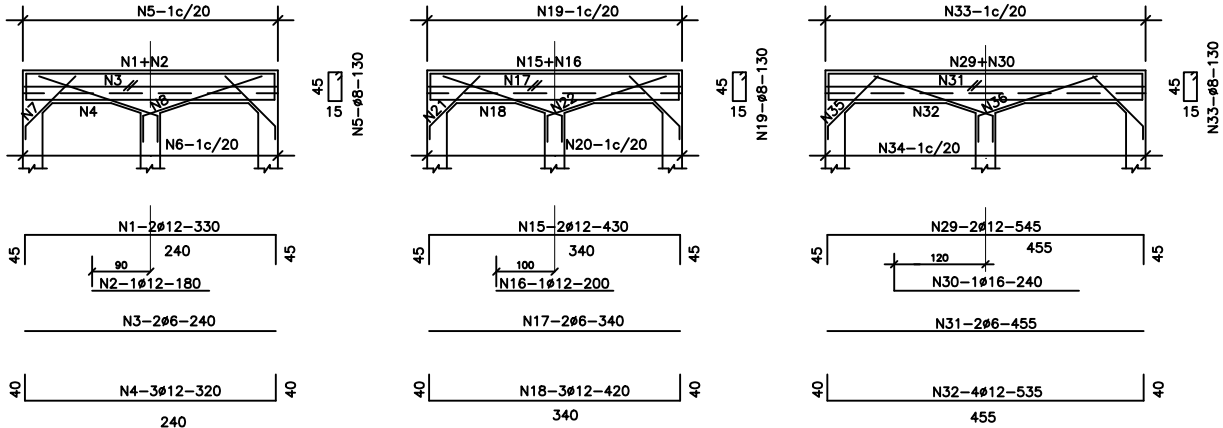


| TABLA DE ARMADURAS PARA VIGAS DE BORDE DE LOSA SUPERIOR E INFERIOR – CELULAR SIMPLE | | | | | | | | | | | | | | | | | | | | | | | | | | | | | | | | | |
|---|-----|-----|-----|-----|-----|-----|-----|-----|-----|-----|-----|-----|-----|-----|-----|-----|-----|-----|-----|-----|-----|-----|-----|-----|-----|-----|-----|-----|-----|-----|-----|-----|-----|
| No | 1 | 2 | 3 | 4 | 5 | 6 | 7 | 8 | 9 | 10 | 11 | 12 | 13 | 14 | 15 | 16 | 17 | 18 | 19 | 20 | 21 | 22 | 23 | 24 | 25 | 26 | 27 | 28 | 29 | 30 | 31 | 32 | 33 |
| Ø | 12 | 6 | 12 | 8 | 8 | 10 | 12 | 6 | 10 | 12 | 6 | 10 | 12 | 6 | 10 | 12 | 6 | 10 | 12 | 6 | 10 | 12 | 6 | 10 | 12 | 6 | 10 | 12 | 6 | 10 | 12 | 6 | 10 |
| Cant | 4 | 4 | 8 | 4 | 8 | 14 | 8 | 6 | 16 | 4 | 14 | 8 | 4 | 4 | 8 | 20 | 20 | 8 | 6 | 16 | 4 | 20 | 4 | 4 | 8 | 24 | 24 | 4 | 6 | 16 | 4 | 32 | 4 |
| LONG | 215 | 125 | 205 | 130 | 164 | 110 | 225 | 125 | 265 | 190 | 150 | 265 | 175 | 255 | 130 | 164 | 110 | 275 | 175 | 315 | 190 | 150 | 325 | 235 | 315 | 130 | 174 | 125 | 335 | 235 | 375 | 190 | 170 |

ALCANTARILLA CELULAR DOBLE

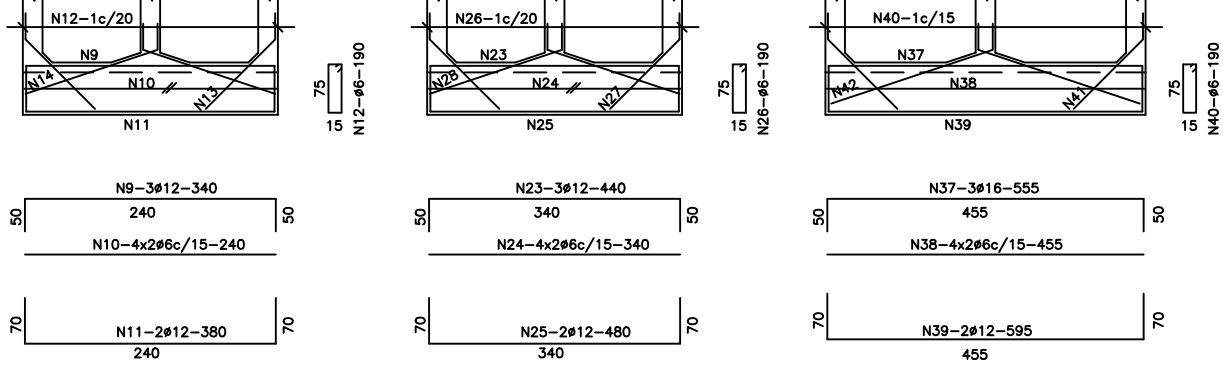
VIGAS DE BORDE DE LA LOSA SUPERIOR

L=100 (2x) L=150 (2x) L=200 (2x)



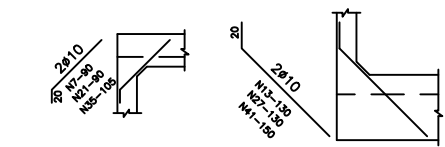
VIGAS DE BORDE DE LA LOSA INFERIOR

L=100 (2x) L=150 (2x) L=200 (2x)

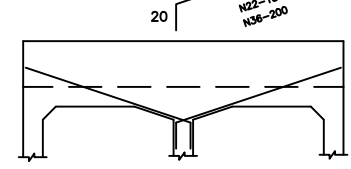


- OBSERVACIONES:
- 1- RESISTENCIA CARACTERÍSTICA DEL ACERO: $f_yk=420$ MPa
 - 2- RECUBRIMIENTO ADOPTADO: 2.5cm
 - 3- NORMA DE CÁLCULO: NBR6118
 - 4- LA CANTIDAD DE ARMADURAS SERA DETERMINADA POR LAS MEDIDAS REALES DEL ENCOFRADO PARA CADA TIPO DE ALCANTARILLA
 - 5- EN LA TABLA ESTAN COMPUTADAS AMBAS CABECERAS

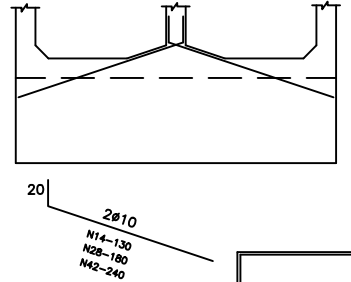
CHAFLÁN
SUPERIOR INFERIOR



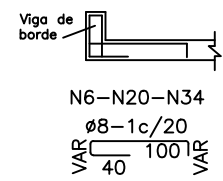
SUPERIOR



CHAFLÁN INFERIOR



VIGA DE BORDE SUPERIOR



| TABLA DE ARMADURAS PARA VIGAS DE BORDE DE LOSA SUPERIOR E INFERIOR – CELULAR DOBLE | | | | | | | | | | | | | | | | | | | | | | | | | | | | | | | | | | | | | | | | | | |
|--|-----|-----|-----|-----|-----|-----|-----|-----|-----|-----|-----|-----|-----|-----|-----|-----|-----|-----|-----|-----|-----|-----|-----|-----|-----|-----|-----|-----|-----|-----|-----|-----|-----|-----|-----|-----|-----|-----|-----|-----|-----|-----|
| No | 1 | 2 | 3 | 4 | 5 | 6 | 7 | 8 | 9 | 10 | 11 | 12 | 13 | 14 | 15 | 16 | 17 | 18 | 19 | 20 | 21 | 22 | 23 | 24 | 25 | 26 | 27 | 28 | 29 | 30 | 31 | 32 | 33 | 34 | 35 | 36 | 37 | 38 | 39 | 40 | 41 | 42 |
| Ø | 12 | 12 | 6 | 12 | 8 | 8 | 10 | 10 | 12 | 6 | 12 | 6 | 10 | 10 | 12 | 6 | 12 | 8 | 8 | 10 | 10 | 12 | 6 | 12 | 6 | 10 | 10 | 12 | 6 | 12 | 8 | 8 | 10 | 10 | 12 | 6 | 12 | 8 | 8 | 10 | 10 | |
| Cant | 4 | 2 | 4 | 6 | 26 | 26 | 8 | 8 | 6 | 16 | 4 | 26 | 8 | 8 | 4 | 2 | 4 | 6 | 36 | 36 | 8 | 8 | 6 | 16 | 4 | 36 | 8 | 8 | 4 | 2 | 4 | 8 | 46 | 46 | 8 | 8 | 6 | 16 | 4 | 62 | 8 | 8 |
| LONG | 330 | 180 | 240 | 320 | 130 | 164 | 110 | 150 | 340 | 240 | 380 | 190 | 150 | 150 | 430 | 200 | 340 | 420 | 130 | 164 | 110 | 200 | 440 | 340 | 480 | 190 | 150 | 200 | 545 | 240 | 455 | 535 | 130 | 174 | 125 | 220 | 555 | 455 | 595 | 190 | 170 | 260 |

REPUBLICA DEL PARAGUAY
MINISTERIO DE OBRAS PUBLICAS Y COMUNICACIONES
GABINETE DEL VICEMINISTRO DE OBRAS PUBLICAS Y COMUNICACIONES
DIRECCION DE VIABILIDAD

ALCANTARILLAS CELULARES

FECHA: FEBRERO / 2024
ESCALA PRINCIPAL: 1/100
LAMINA Nº OD-05